

New Environmental Safety Law:

Effective Feb, 2006 it is unlawful to put hazardous materials in your trash or recycling.

NOT ACCEPTABLE IN RECYCLING OR GARBAGE:

Batteries, Fluorescent Bulbs, Paints, Solvents, Chemicals, Thermometers, Electronic Devices such as TVs, Computers, VCRs, Cell Phones, Radios, Electronic Toys, Microwave Ovens and All Appliances and Items containing Mercury.



Photos courtesy of Castro Valley Sanitary District.

Dispose of Hazardous Waste Safely and Legally:



Take items to the nearest Household Hazardous Waste drop-off center: for center locations and hours of operation, call (800) 606-6606. Contact StopWaste.Org at (877) STOPWASTE (786-7927) for more information and other locations.

For information on other services such as Holiday Tree-Cycling and Bulky Item Pickup, contact your property manager or call the City of Emeryville (510) 596-3728.

Contacts and Important Numbers

City of Emeryville, Environmental Program	(510) 596-3728
	www.ci.emeryville.ca.us/community/environment.html
Household Hazardous Waste	(800) 606-6606
Alameda County Recycling Hotline	(877) STOPWASTE (786-7927)
	www.StopWaste.Org
Waste Management Customer Service	(510) 613-8710
Para obtener esta información en español, llame al	(510) 613-8710
索取中文資料，請致電：	(510) 613-8710
Muốn biết thêm chi tiết bằng tiếng Việt, xin gọi	(510) 613-8710



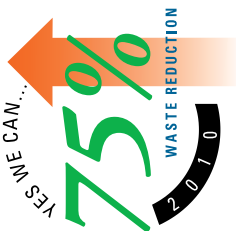
CITY OF EMERYVILLE
1333 Park Avenue
Emeryville, CA 94608



EMERYVILLE, KEEP OUR CITY CLEAN...

REDUCE – REUSE – RECYCLE – ROT

Keep our community clean and beautiful, recycle and dispose refuse in the appropriate manner and containers.



The following have contributed funding for this brochure:

- The California Department of Conservation
 - Recycle! It's good for the Bottle, it's good for the Can
- Waste Management of Alameda County
 - Think Green
- StopWaste.Org
 - Reducing the Waste Stream for Alameda County




City of Emeryville

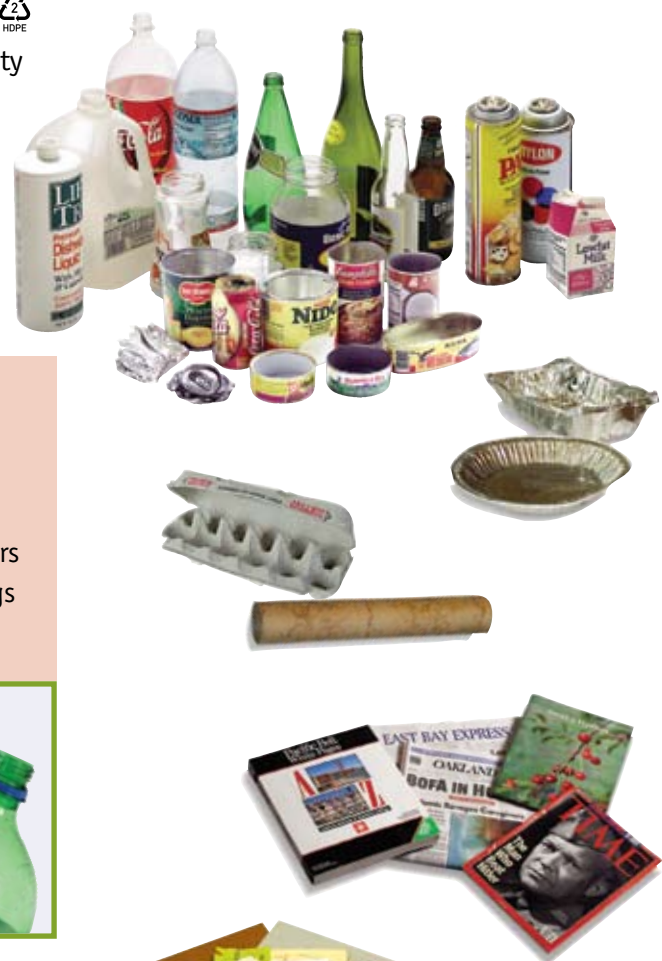
www.ci.emeryville.ca.us

Recycling & Disposal Guide for Multi-Units, Condos and Apartments

RECYCLING FOR: APARTMENTS, CONDOS, MULTI-FAMILY UNITS

BOTTLES, JARS, CANS, FOIL, PAPER & CARDBOARD

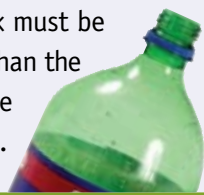
- Plastic bottles – only 
- Aerosol cans must be empty
- Clean aluminum foil
- Paper clips, staples, junk mail with windows and “stickies” are OK



Do Not Include:

- Yogurt/margarine tubs
- Plastic six-pack rings
- Styrofoam
- Clam-shell type containers
- Drinking glasses or mugs
- Ceramics of any kind

Tip: Plastic Containers – the neck must be narrower than the body to be recyclable.



FOOD SCRAPS

Interested in recycling food scraps and plant debris?

Call the City of Emeryville at (510) 596-3728. Your complex may be suitable for the Organics Pickup program.



Flatten Cardboard!



RECYCLABLES IN: WHITE DUMPSTER, CHUTE OR GRAY CART

Put your recyclables in the appropriate place. It may be a Recycling Chute, White Dumpster or Gray Cart.

- Do not put food waste or garbage with recyclables
- Do not place large items down the chute



GARBAGE IN: GREEN DUMPSTER, CHUTE OR BURGUNDY CART

Put your garbage in the Garbage Chute, Green Dumpster or Burgundy Cart.

- Non-recyclable plastics such as: bags, tubs and Styrofoam
- Food waste and general refuse
- Diapers, pet waste and litter
- Small broken household items



Tip: Take used, clean plastic bags to your grocery store for recycling.

Do Not Include:

- Dirt, Rocks or Cement
- Hazardous materials such as:
 - Batteries, Fluorescent Light Bulbs, Paints
 - Appliances or Items containing Mercury
 - Pesticides, Herbicides, Chemicals and Solvents
 - Syringes and Sharps
 - Large Appliances or Furniture



To dispose of large household furniture or appliances, talk with your property manager or call the City of Emeryville (510) 596-3728 for options.

Need to dispose of items in good condition? Call the Alameda County Recycling Hotline: (877) STOPWASTE (786-7927) for recycling and reuse options.

